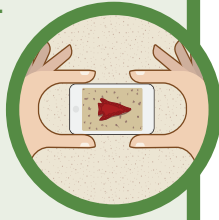


PLEASE DO:

- Look and imagine how people lived and used the landscape you are visiting.
- Appreciate the desert way of life.
- If you find an artifact leave it where you found it.
- Mark the location of the artifact on a map or GPS.
- Take a picture or make a drawing.
- Tell an adult what you found.
- Report your findings to a ranger or Anza Borrego Desert State Park staff at the Visitor Center.
- Ask a ranger or park staff if you're not sure what to do.



PLEASE DON'T:

- Pick up or move anything you find.
- Collect or remove anything you find.
- Post GPS coordinates of what you find on the internet.
- Dig or change the landscape of the areas you visit.
- Leave trash or anything else behind when you leave.



THANK YOU!

With your help we can protect and preserve our important and non-renewable archaeological resources.

WANT TO LEARN MORE?

Contact the Colorado Desert Archaeology Society and find out how you can help. CDAS is an organization whose mission is to document, preserve, and protect cultural resources in ABDSP.

Colorado Desert Archaeology Society
200 North Palm Canyon Drive
Borrego Springs, CA 92004
email: info@anzaborregoarchaeo.org

Visitor Center: 760-767-4205



WHAT TO DO (AND NOT DO)

WHEN VISITING AN ARCHAEOLOGICAL SITE IN

ANZA BORREGO
DESERT STATE PARK



SIGNS OF THOSE WHO CAME BEFORE YOU

Anza Borrego Desert State Park is rich in archaeological cultural resources which are the objects and locations left on the landscape by the people who came before us. Native Americans, Spanish, Mexicans, American miners, ranchers, travelers and others have been here for a very long time.

When you are out in the park you can expect to find signs of those who came before. You may see potsherds, debris from stone-tool making, other artifacts, and places on large rocks where people prepared their foods. You may see rock shelters and rock art, remains of campfires, old roads, walls, building foundations, and fence lines.

**ALL OF THESE AND OTHERS
ARE PART OF THE
ARCHAEOLOGICAL RECORD.**



CUPULES

The archaeological record is composed of things that help us learn about the past in the Park and elsewhere. They lose their potential for teaching us when they are moved or changed in any way. They represent cultural values of the past and must be preserved. These sites provide a tangible connection to our cultural heritage.

People often do not realize that moving or removing archaeological materials or damaging sites is against state and federal laws and carry penalties for violations. These laws provide protection for archaeological resources which are part of our collective past and cultural heritage.

**NOT SURE WHAT TO DO?
ASK A RANGER OR PARK
STAFF MEMBER!**



**PAINTED ROCK ART
INSIDE A CAVE**



**BROKEN PIECE OF
AN OLD CLAY OLLA**



**EARLY ERA
FARM TRACTOR**



**BEDROCK MORTAR
AND PESTLE**



**QUARTZ ARROW
POINT**



**PART OF AN
OLD BOTTLE**